



SEA

A NEVER ENDING LOVE STORY

ISABELLA PADOAN

SEA, A NEVER ENDING LOVE STORY

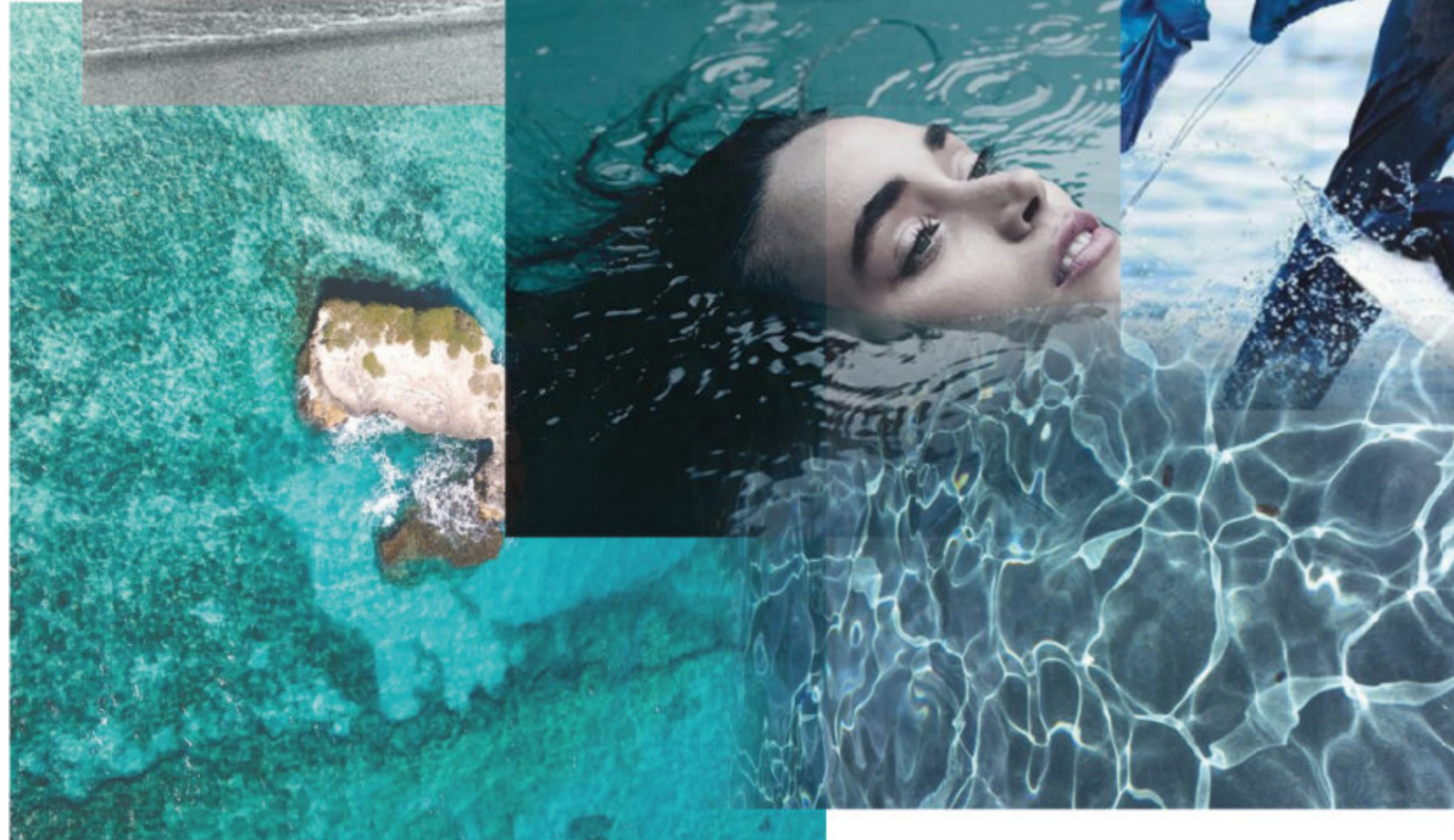
moodboard

John Gaunt, 1954



"Acqua che all'acqua
torna, di luce sfran-
giata,
si apre l'onda in
spuma.
Movimento perpetuo,
arco perfetto,
che si erge, ricade e
rifluisce,
onda del mare che il
mare stesso nutre,
amore che di se
stesso si alimenta."

José Saramago
Acqua che all'acqua torna



A project inspired by my love for sea.

Sea inspires me thanks its moves and effects.

I created a clean look using a tone on tone print.

You can find dynamic cuts and shapes and feminine details.

I think that it's in line with the Oysho clean look and trends, where I find tonal prints and fine elements.

About materials, I would use performance and breathable fabrics for the fitness garments: bra, leggings and dress.

Instead for the t-shirt I would use material with a percent of modal, for a very comfortable effect.

For the tracktop, that is a special garment, I would use an interlock, with a percent of modal, matched with a simil-organza transparent.

A romance topic for a fine brand.

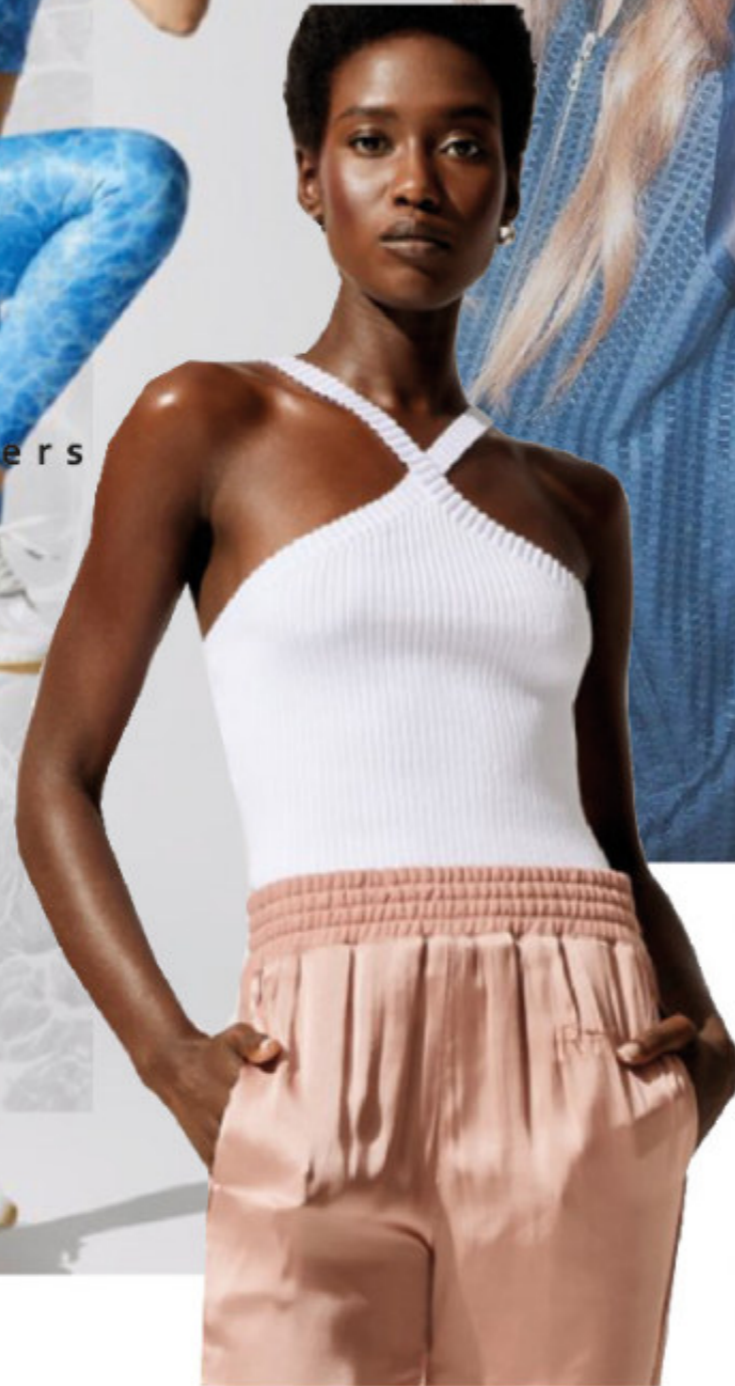
SEA, A NEVER ENDING LOVE STORY

moodboard, shapes and volumes

Sea texture



Crossed shoulders



Transparence



Curl detail

SEA, A NEVER ENDING LOVE STORY

color chart

Colors inspired by the nature

Safe colors

Vineyard Green 18-0117 TCX

Bright White 11-0601 TCX

Asphalt 19-0201 TCX

Active colors

Caribbean Sea 19-4525 TCX

Dahlia Purple 17-3834 TCX

Innuendo 18-2042 TCX

Feminine colors

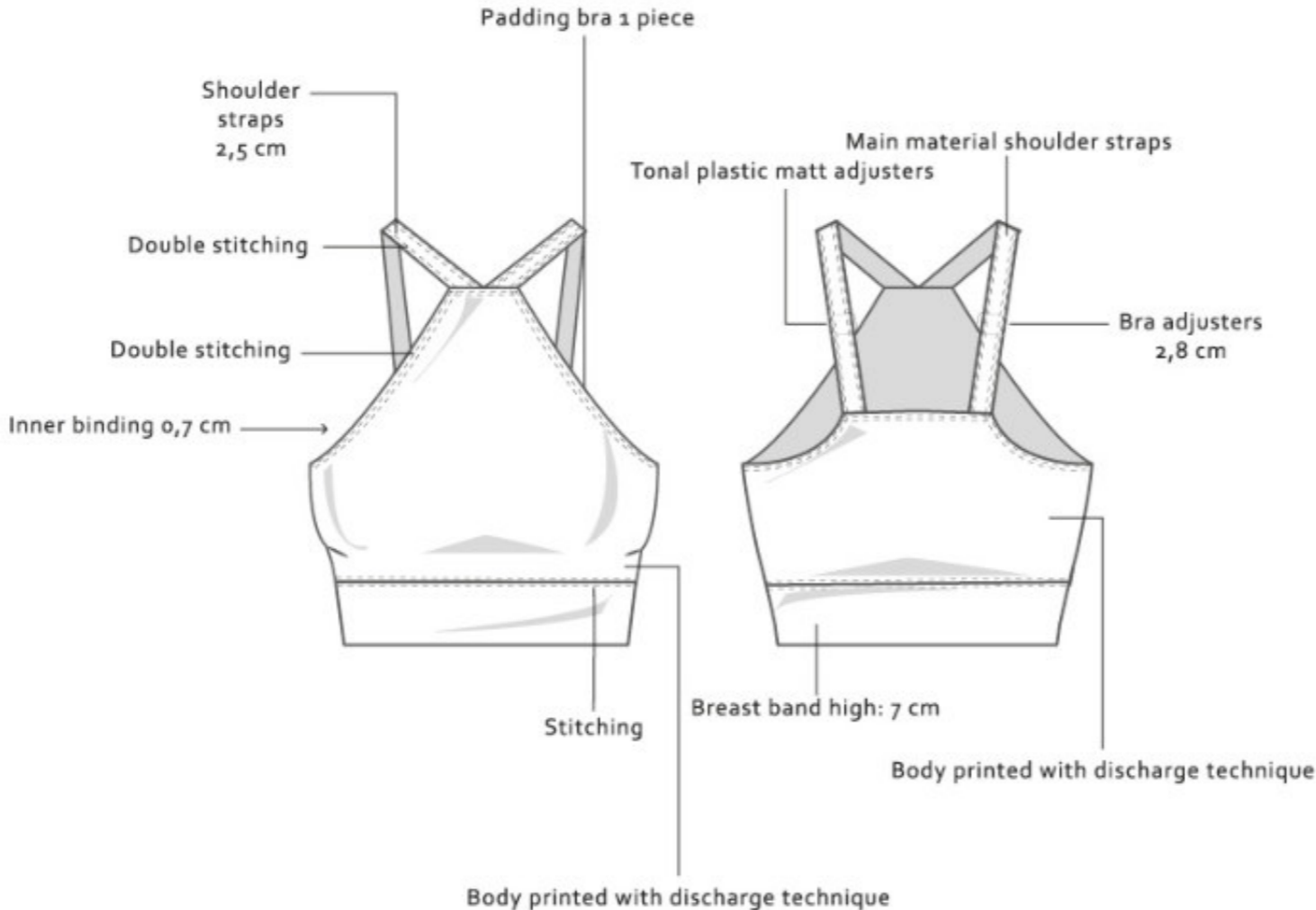
Soft colors

Arctic Wolf 12-0602 TCX



SEA, A NEVER ENDING LOVE STORY

bra development

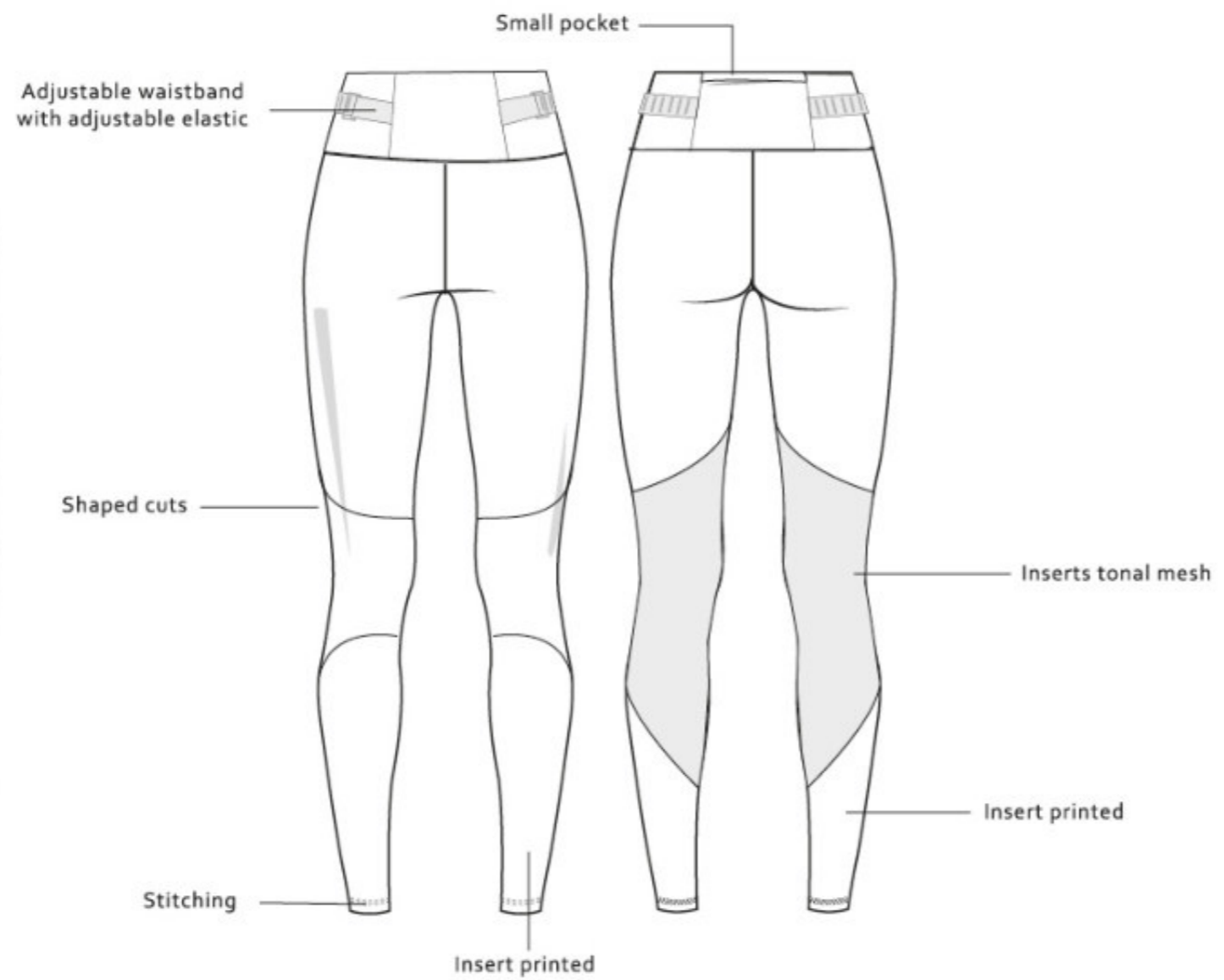


Description:
 Performance bra with padded breast.
 Particular shape for shoulder straps.
 Performance fabric for fitness use.
 Breatheble fabric of course.
 Very tight fit.

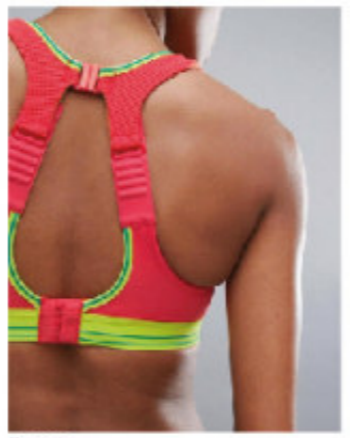


SEA, A NEVER ENDING LOVE STORY

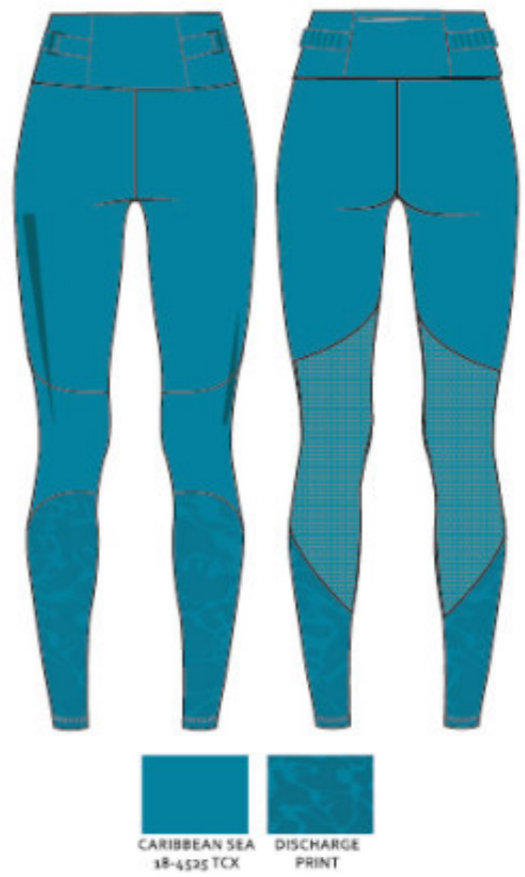
leggings development



Description:
 Performance leggings:
 Waistband height 8 cm.
 Printed inserts.
 Mesh inserts for breathability.
 Shaped cuts.
 Performance fabric.
 Breatheble fabric.
 Adjustable waistband
 with adjustable elastic

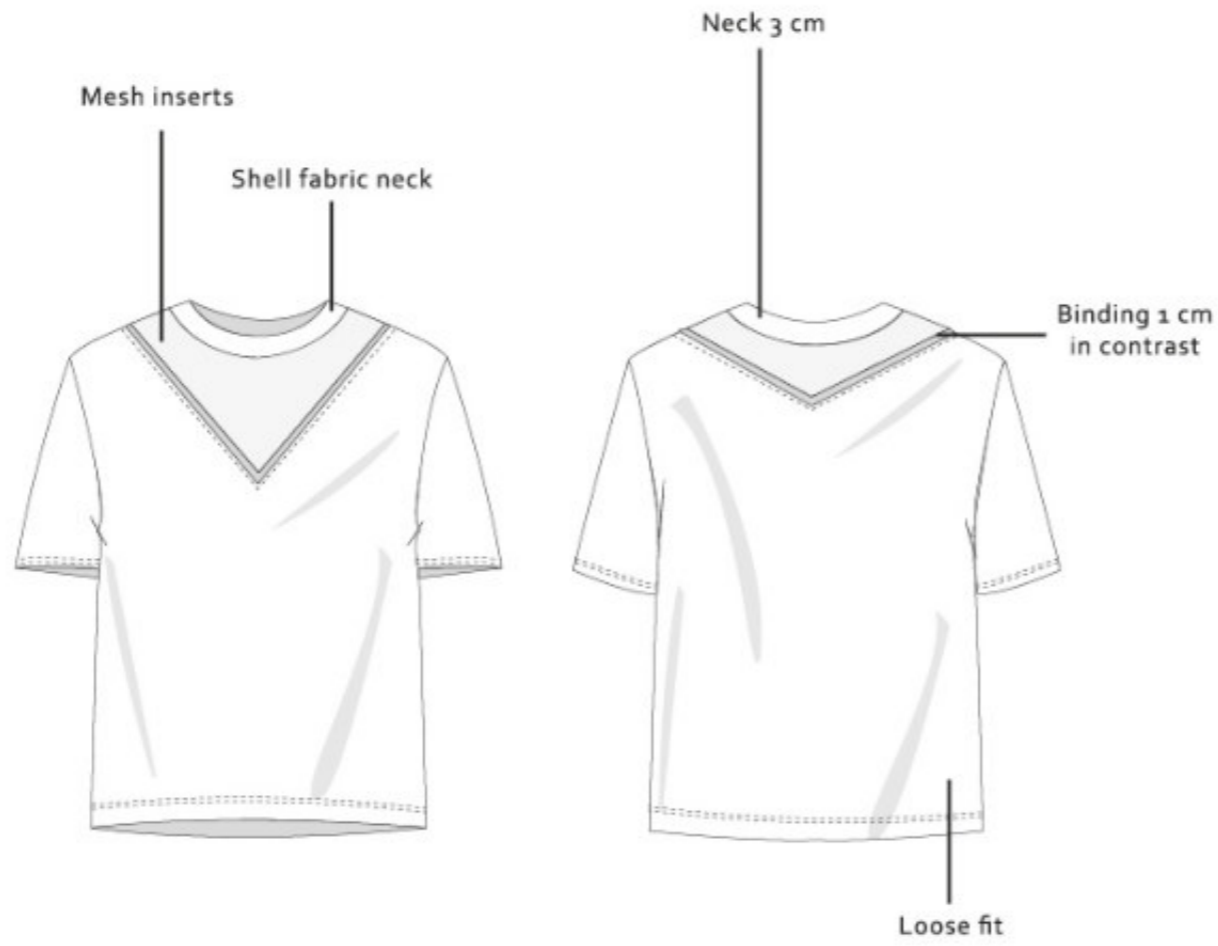


Details

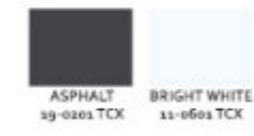
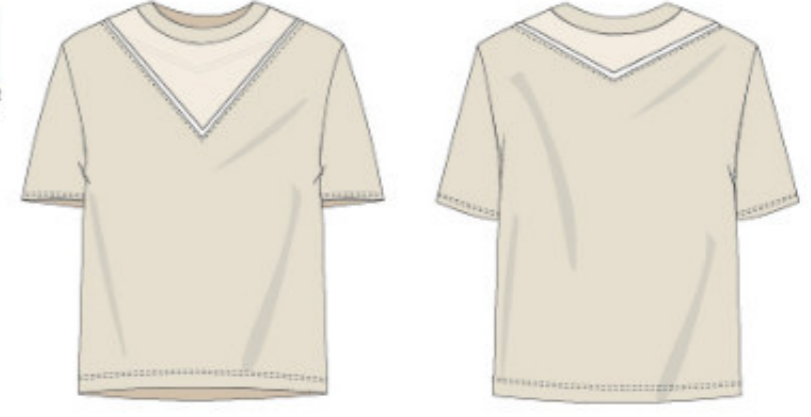


SEA, A NEVER ENDING LOVE STORY

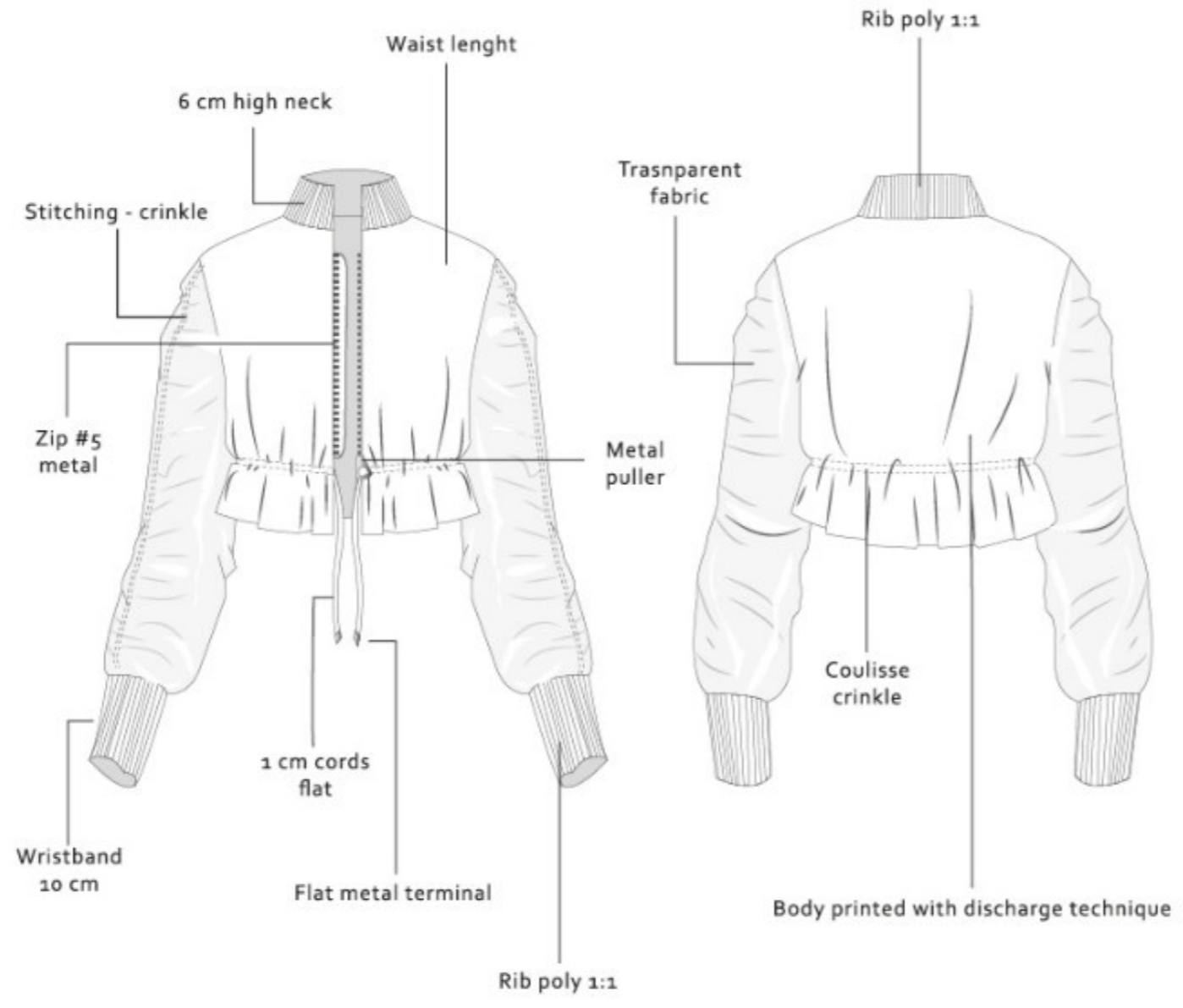
T-shirt development



Description:
 A box t-shirt.
 Semitransparent inserts on the front and back.
 Binding 1 cm in contrast.
 Wide short sleeves.
 Loose fit.



SEA, A NEVER ENDING LOVE STORY
 tracktop development



Description:
 Tracktop with curled stitching.
 Waist length and baggy fit.
 Wristband height 10 cm in rib poly 1:1.
 Printed body tone o tone.
 Small zip #5 metal.
 Interlock and simil-organza fabrics semitransparent.



BRIGHT WHITE
 11-0601 TCX
 DISCHARGE
 PRINT



VINEYARD GREEN
 18-0517 TCX
 DISCHARGE
 PRINT



DAHLIA PURPLE
 27-0834 TCX
 DISCHARGE
 PRINT



ASPHALT
 59-0205 TCX
 DISCHARGE
 PRINT



SEA, A NEVER ENDING LOVE STORY

print development



Develop allover graphic
Discharge technique
Soft effect
Abstract effect
Various colours



Inspiration texture



Transparence



Placed and allover



BRIGHT WHITE
11-0601 TCX



ARTIC WOLF
11-0602 TCX



VINEYARD GREEN
18-0117 TCX



CARIBBEAN SEA
18-4525 TCX



DAHLIA PURPLE
17-9834 TCX



INNUENDO
18-2042 TCX



ASPHALT
19-0201 TCX



ISABELLA PADOAN